

CUSTOMER POWER OUTAGE REPORT



41,000

calls to contact centre.



150,800

SMS messages sent over the outage period.



200,000

restored connections, numbers increasing every day.



228

highest peak of outages across all parts of Tasmania – 47,000 customers off at this time.



45,500

outage reports from customers (website forms).



169,600

people on the website over 29 August - 3 September period.



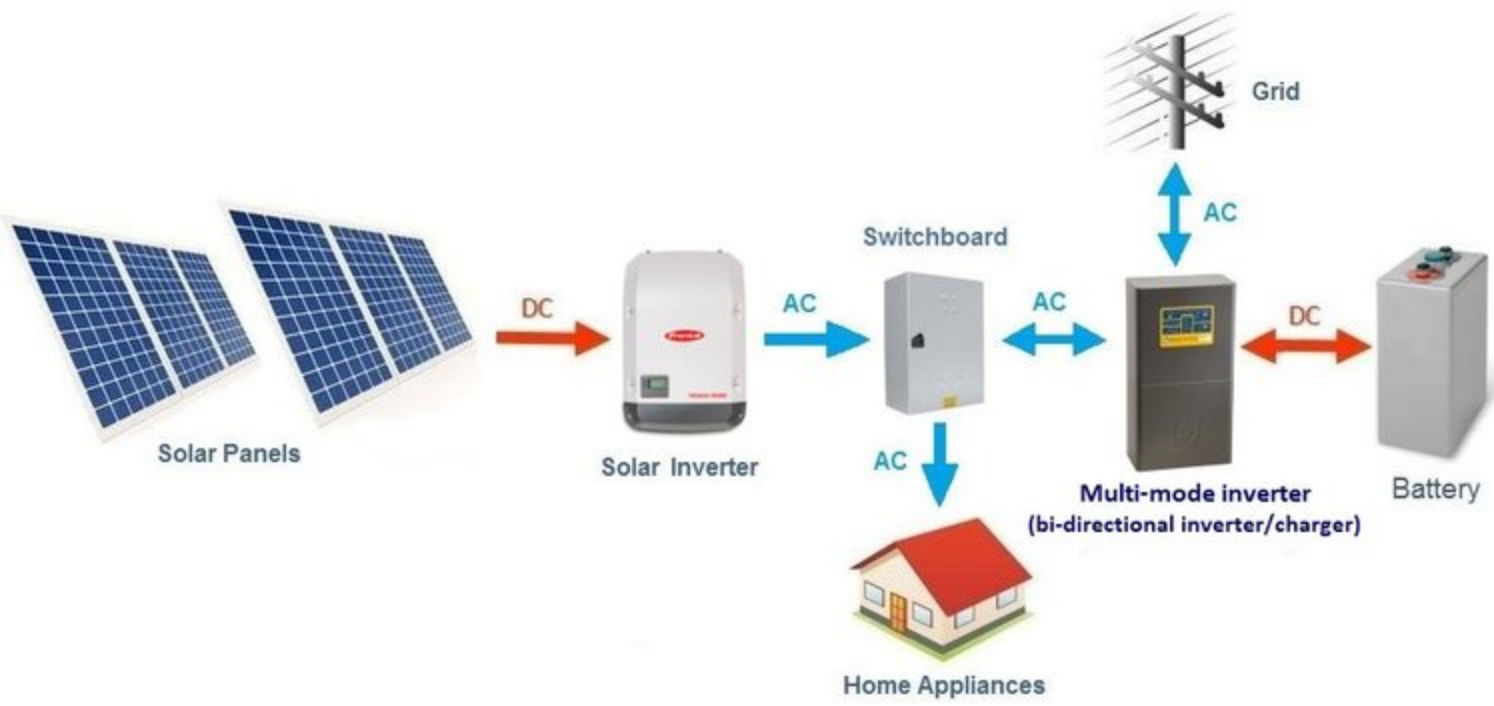












EV Buses

- ▶ All Buses
 - ▶ Power rating 80KW / 140KW
 - ▶ Torque rating 600NM / 1000NM
 - ▶ Distance Range 800KM
 - ▶ Empty to Full Charge time 1-4 hours
 - ▶ Dimensions 12.5mtr, 2.49mtr, 3.6mtr (LWH)
- ▶ City Bus
 - ▶ Maximum occupancy 81 standing / 35 seated + 1 driver
 - ▶ Gross Vehicle Mass 20,000kg
 - ▶ Net vehicle mass is 12,000kg
- ▶ Touring Coach
 - ▶ Maximum occupancy 49 seated + 1 driver
 - ▶ Gross Vehicle Mass 20,500kg
 - ▶ Net vehicle mass is 12,500kg





30

INTERNATIONAL

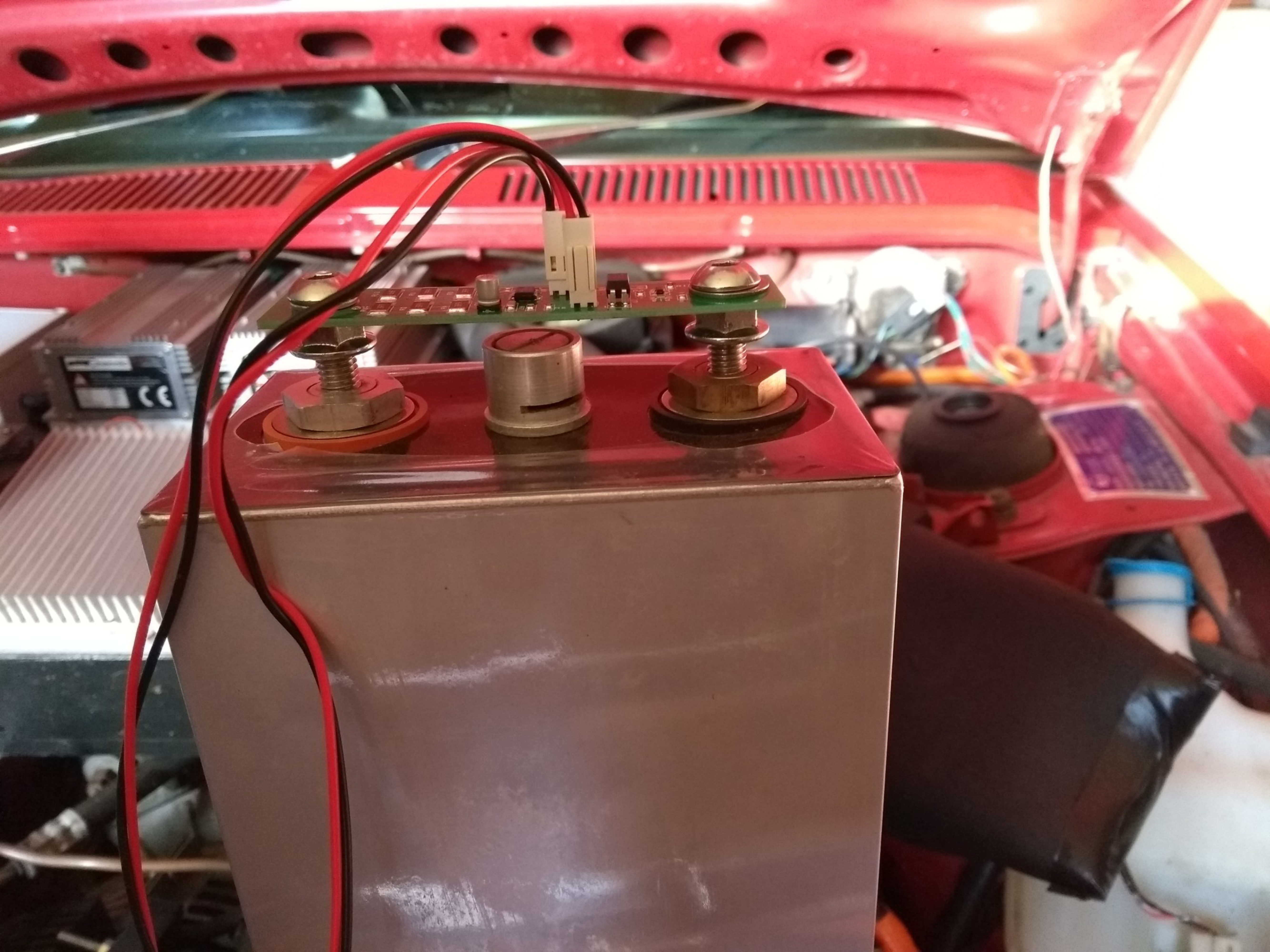
DAILY

DO NOT
STACK
ANYTHING
ON TOP



QC LABORATORY

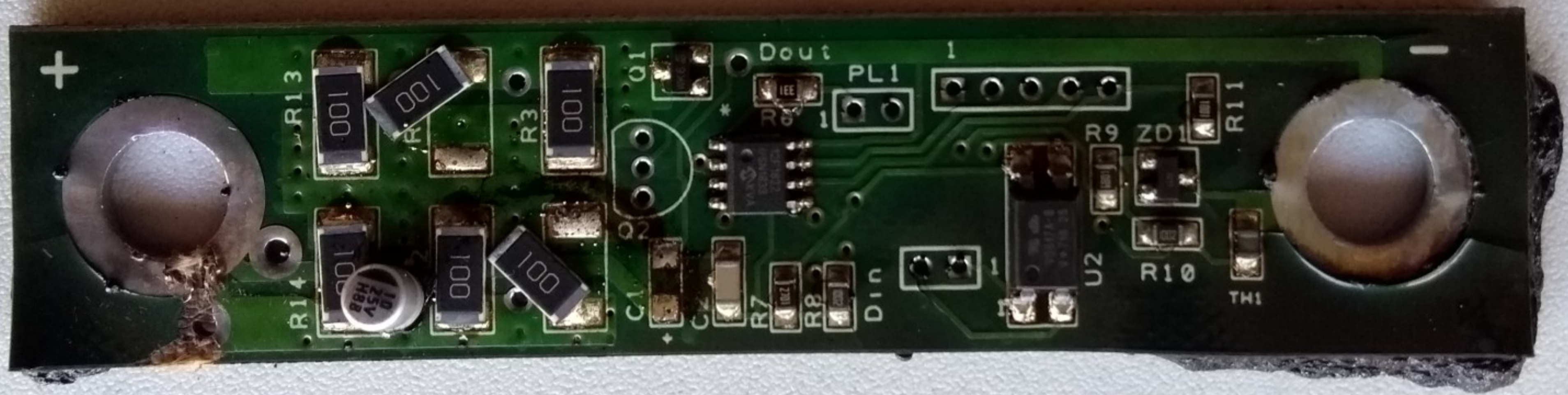
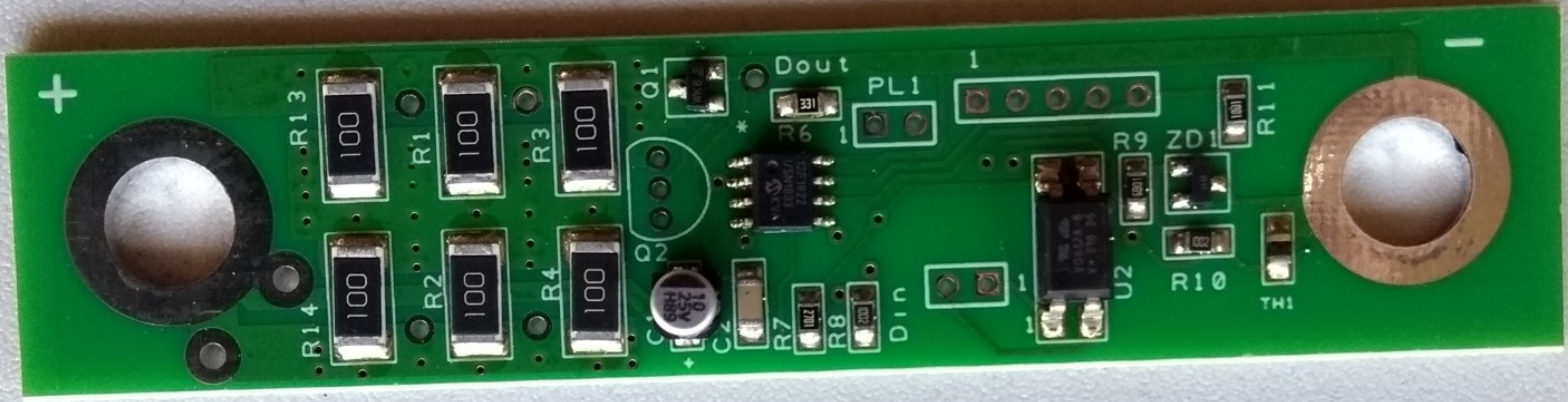
en (0417587935)
33)
ot, 49 Translink
RAS 7212
AT: 31.11.17

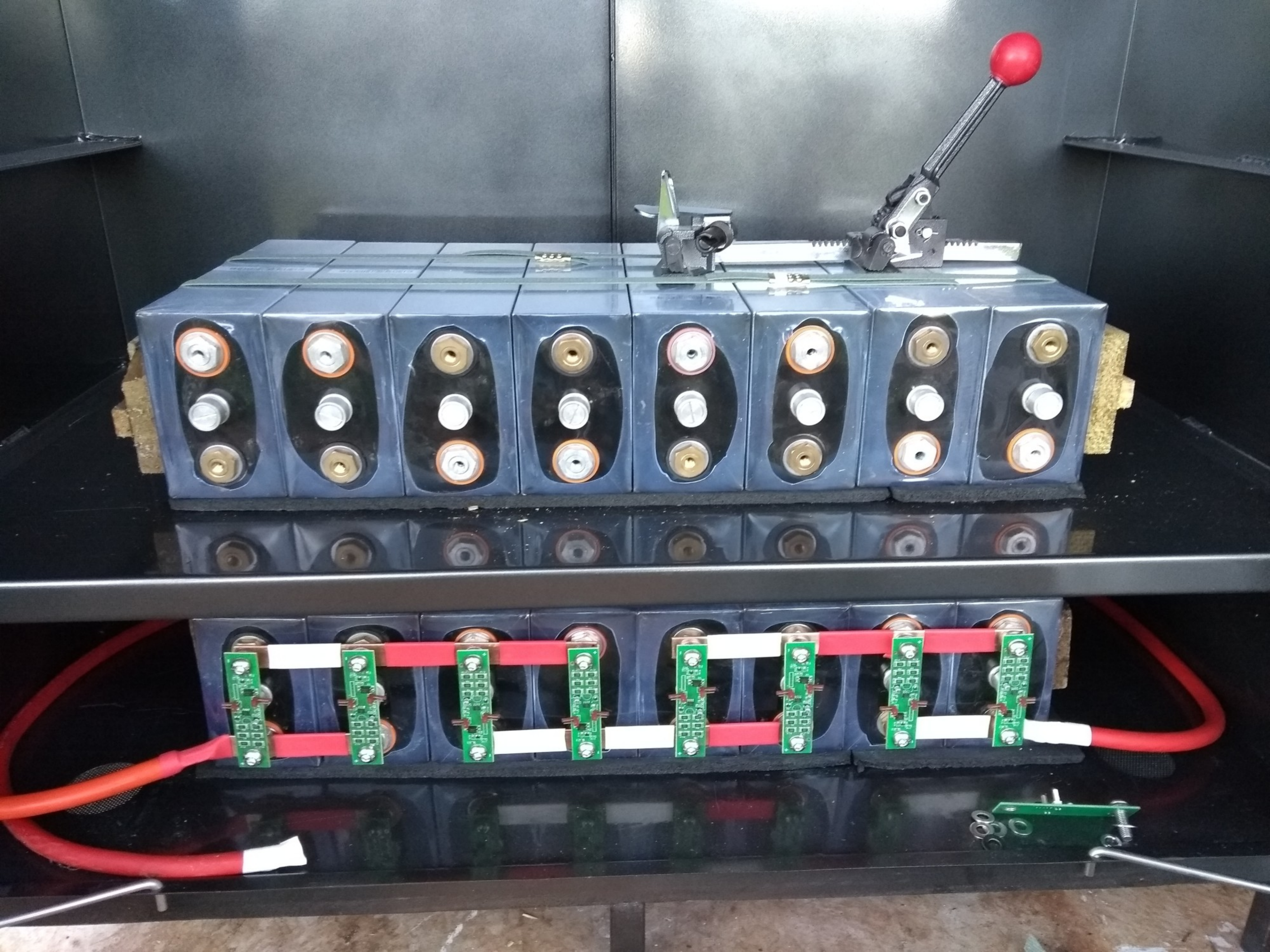


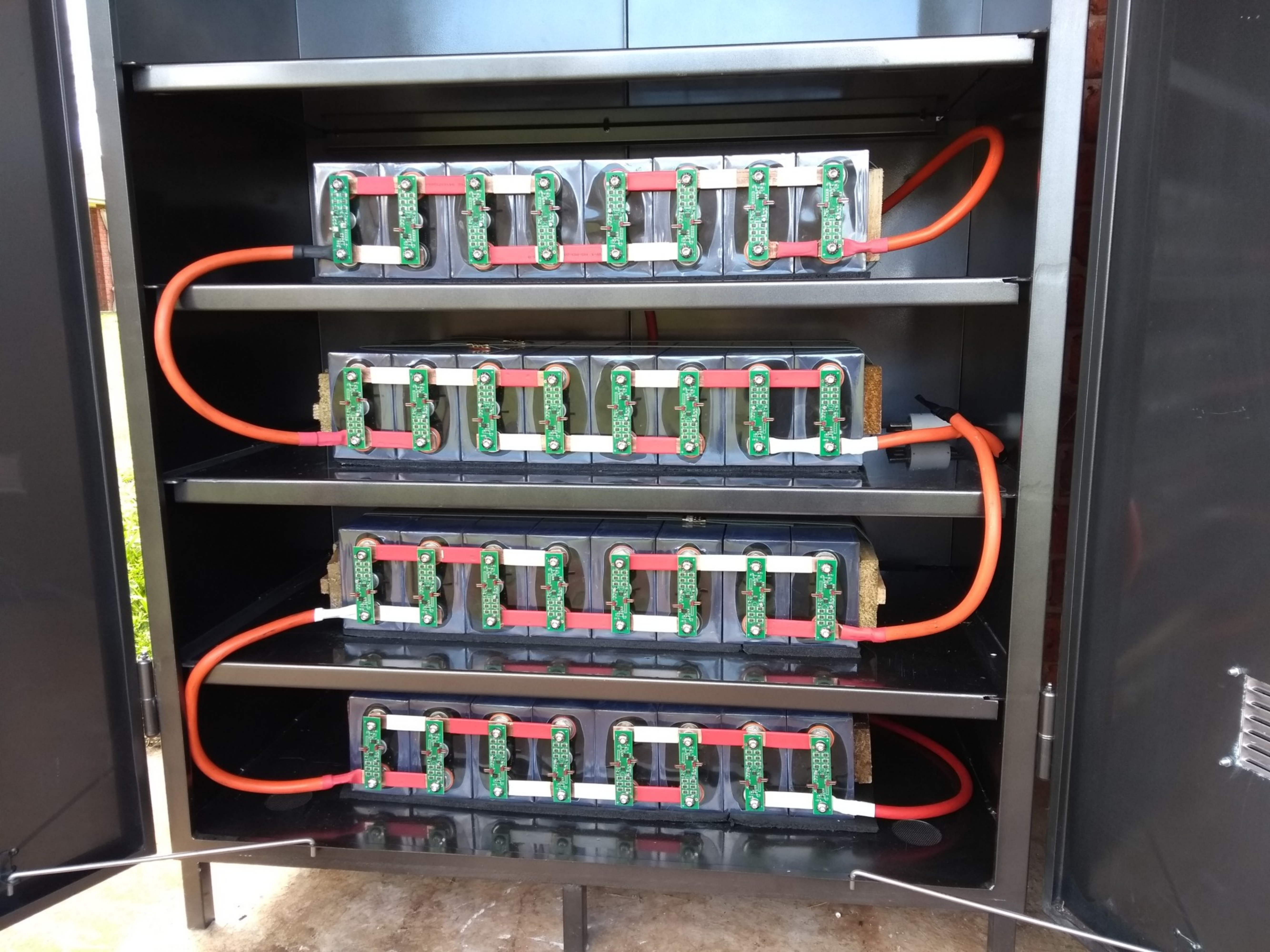














SELECTRONIC SP100

WARNING
Risk of battery explosion
No smoking, sparks, flames

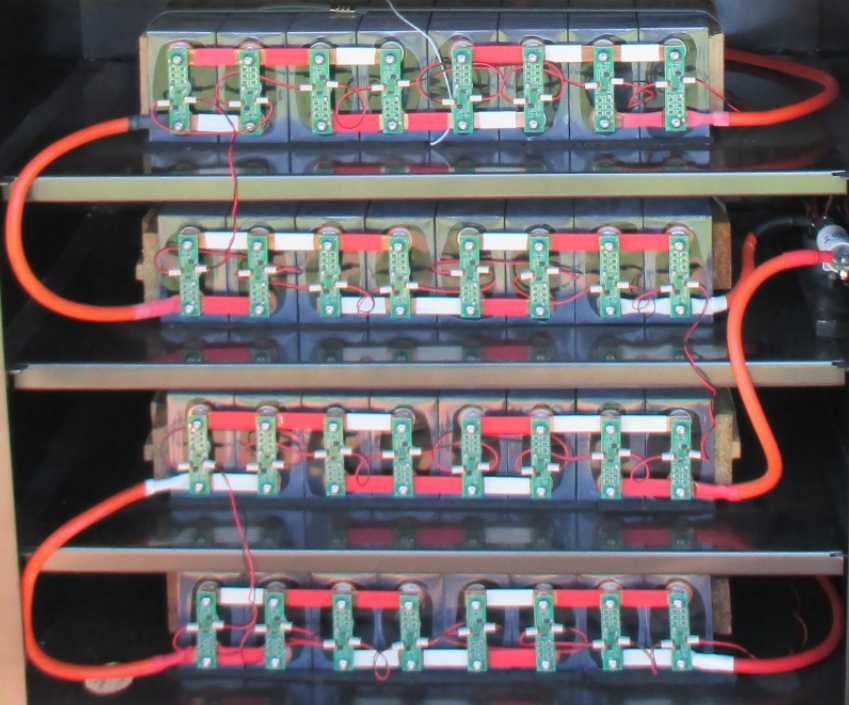
INSTALLATION INSTRUCTIONS
1. Make sure the battery is fully charged before use.
2. Do not use the battery in a high temperature environment.
3. Do not use the battery in a high humidity environment.
4. Do not use the battery in a high vibration environment.
5. Do not use the battery in a high pressure environment.
6. Do not use the battery in a high magnetic field environment.
7. Do not use the battery in a high electromagnetic interference environment.
8. Do not use the battery in a high radio frequency environment.

SELECTRONIC

SELECTRONIC

BATTERY
CHEMISTRY
LiFePO4

DANGER
Risk of battery explosion
NO SMOKING
NO SPARKS
NO FLAMES





Cost

- Battery: \$2000 (32 of the smaller AVASS cells described [here](#))
- Cabinet: \$2751 (installed)
- Inverter/Charger: \$8411 (installed)
- BMS: \$200 (or so)

Total \$13,262 installed, if I don't count my labour. This 20 kWh system is approximately the price of a Tesla Powerwall, which is 13.5 kWh.